

Bryophyte collection: Useful tips

Lova MARLINE

Moss

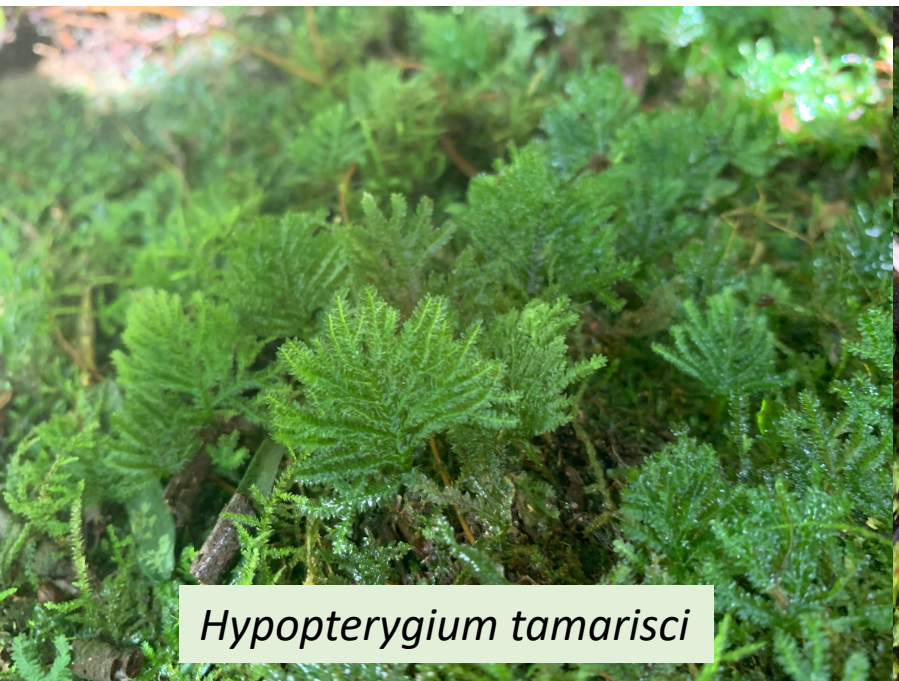




Dicranum sp



Sphagnum sp



Hypopterygium tamarisci



Sematophyllum sp

Liverwort





Cheilolejeunea sp



Pleurozia gigantea



Herbertus sp



Hornwort



Bryophyte 101 ... How do they grow?

Pendant

Dendroid

Weft

Mat

Turf

Cushion



Bryophyte 101 ... where to find them?

On soil: clay, limons,
Terricolous



On tree bark or shrubs: **Corticolous**



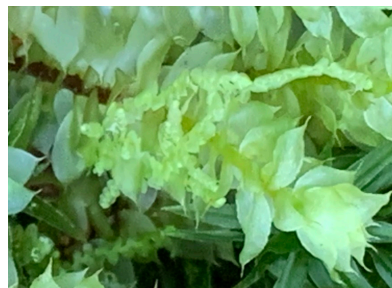
On rocks: **Rupicolous**



On living leaves: **epiphyllous**



On other bryophytes: **Bryophyllous**



On insect: **Insecticolous** 😂



On organic matters in decomposition : humus (**humicolous**)

On decaying wood (**lignicolous**), corpses & dungs (**coprophilous**)

in water: **amphiphytes**



Collecting techniques

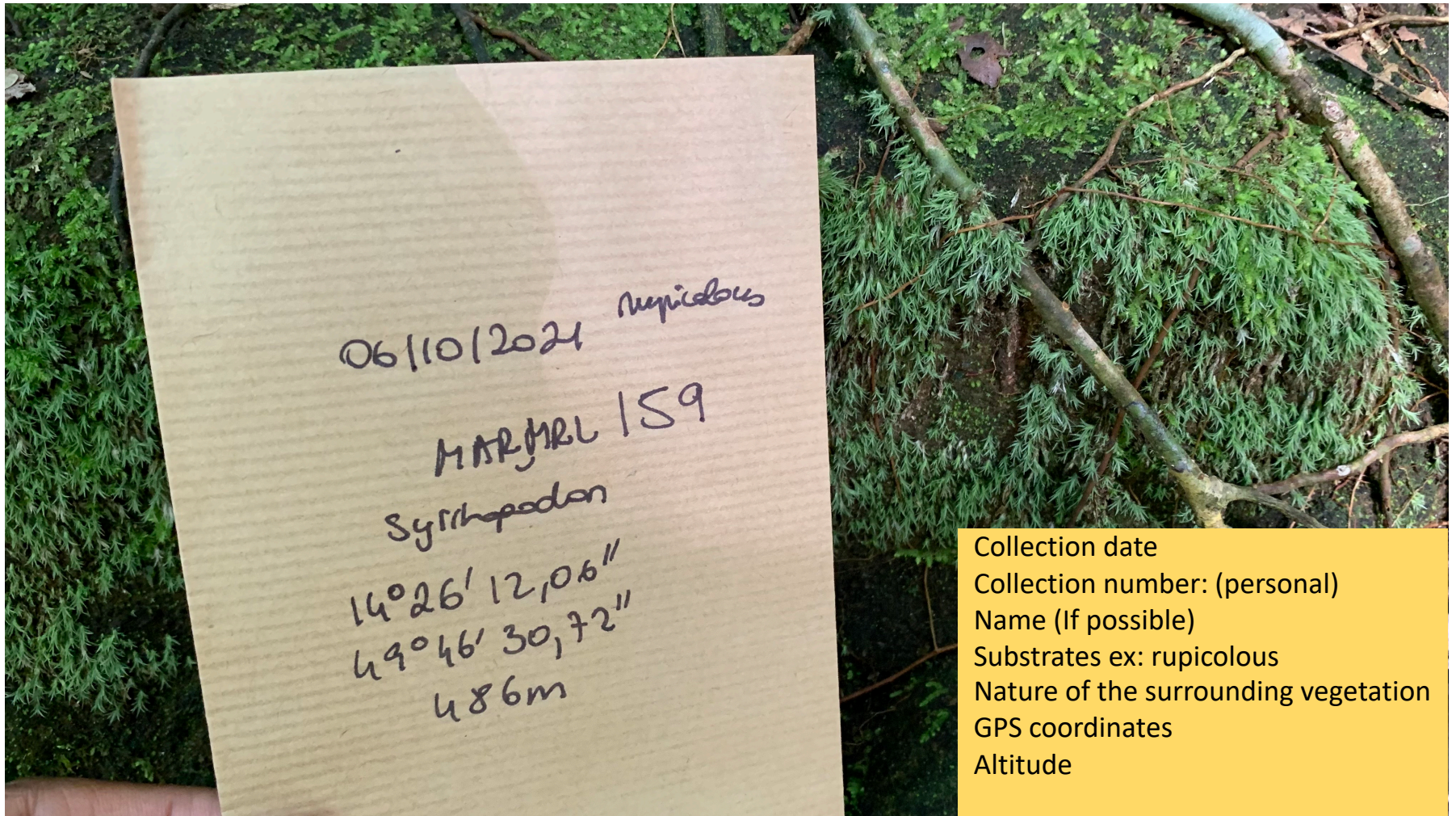
- Use provided packets (sandwich bag) to collect Bryophytes
- Sporophytes should be included in bryophyte collections wherever possible, and dioicous species both male and female plants where possible
- Packets should be clearly labelled
- Quantity:
 - ~ 12 x 8 cm
 - ~ 20 individuals for big plants

Collecting techniques

Field Gear Checklist:

- hand lens on lanyard or string
- sharpie permanent ink
- pencil
- knife with protected point
- bag for collections
- Ziploc plastic baggies
- GPS

Collecting techniques



Drying specimens

 **Air drying only:** at ambient temperature as quickly as possible to prevent mould

→ ideally open the packets

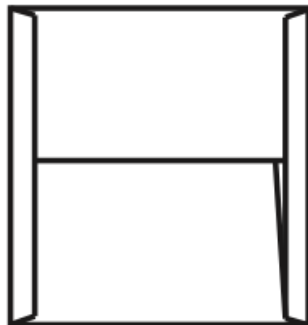
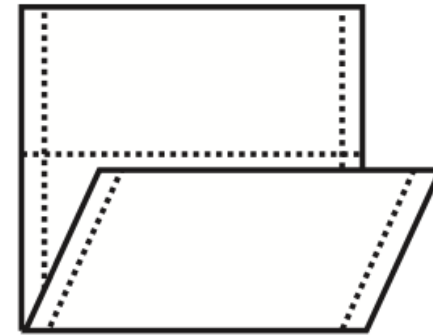
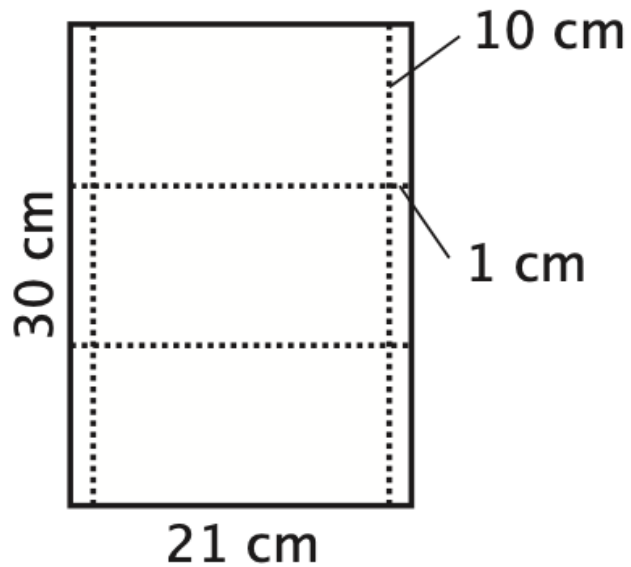
→ you can leave in the sun for a little bit but not for too long

 **Never put in the dryer**

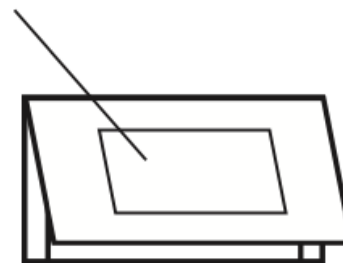


Storing specimens

After drying, transfer specimens to archival paper storage packets



Label
etiquette



Storing specimens

BRYOPHYTES OF MADAGASCAR

PARC ZOOLOGIQUE ET BOTANIQUE DE TSIMBAZAZA (TAN)

ROYAL BOTANIC GARDENS, KEW (K)

DEPARTEMENT DE BIOLOGIE VEGETALES, UNIVERSITY OF ANTANANARIVO

No.

Det:

Fam.:

Species:

Loc.:

S

E

Elevation:

Habitat:

Date:

Coll.:

EXPEDITION: RBG KEW AND KMCC MADAGASCAR _ MSC/ FIELD COURSE TO MADAGASCAR 2023 (BIO778 P)

Herbarium label